

**Transmission of material in this release is embargoed until 8:30 a.m. (EDT) Wednesday, September 16, 2009**

USDL-09-1124

Technical information: (202) 691-7000 • [Reed.Steve@bls.gov](mailto:Reed.Steve@bls.gov) • [www.bls.gov/cpi](http://www.bls.gov/cpi)  
Media Contact: (202) 691-5902 • [PressOffice@bls.gov](mailto:PressOffice@bls.gov)

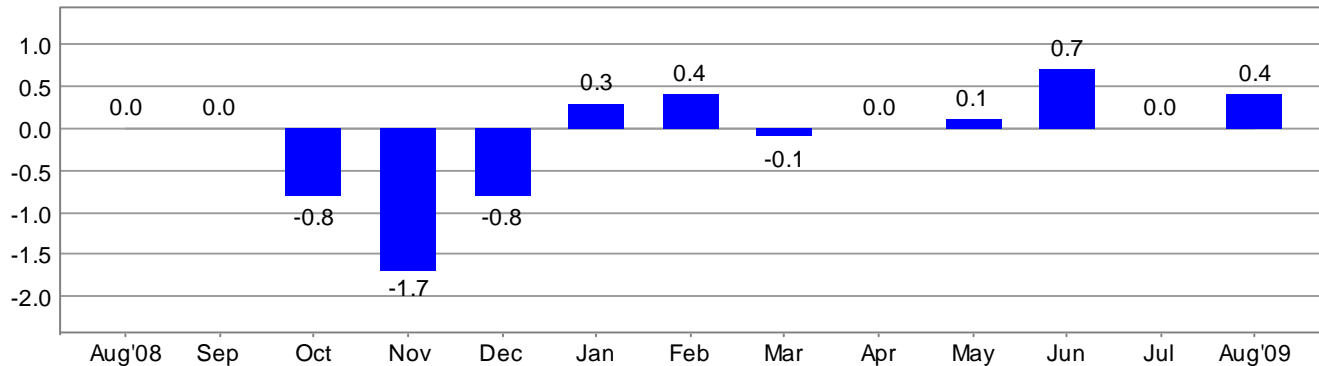
### CONSUMER PRICE INDEX – AUGUST 2009

On a seasonally adjusted basis, the Consumer Price Index for all Urban Consumers (CPI-U) rose 0.4 percent in August, the Bureau of Labor Statistics reported today. The index has decreased 1.5 percent over the last 12 months on a not seasonally adjusted basis.

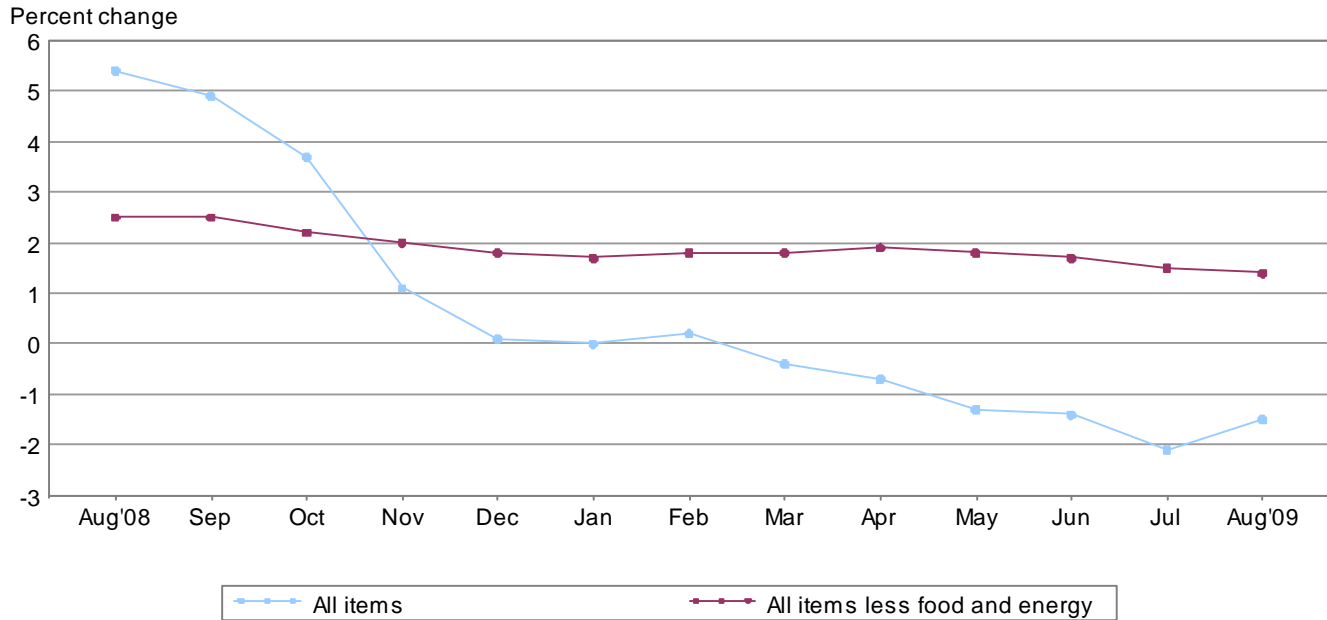
The 0.4 percent seasonally adjusted increase in the CPI-U was driven by a 9.1 percent rise in the gasoline index. This increase accounted for almost the entire advance in the energy index and over 80 percent of the overall increase. Despite the August increase, the gasoline index has fallen 30.0 percent over the last 12 months.

The indexes for food and for all items less food and energy both posted slight increases in August. The food index rose 0.1 percent following a 0.3 percent decline in July. The food at home index, which fell 0.5 percent in July, was unchanged in August. Of the six major grocery store food group indexes, three rose in August and three declined. The index for all items less food and energy also rose 0.1 percent in August, the second consecutive such increase. Increases in the indexes for used cars and trucks, medical care, public transportation and lodging away from home offset a decline in the new vehicle index. The index for all items less food and energy increased 1.4 percent over the last 12 months, the smallest 12-month increase in the index since February 2004.

**Chart 1. One-month percent change in CPI for All Urban Consumers (CPI-U), seasonally adjusted, Aug. 2008 - Aug. 2009**  
Percent change



**Chart 2. 12-month percent change in CPI for All Urban Consumers (CPI-U), not seasonally adjusted, Aug. 2008 - Aug. 2009**



**Table A. Percent changes in CPI for All Urban Consumers (CPI-U): U.S. city average**

	Seasonally adjusted changes from preceding month							Un-adjusted 12-mos. ended Aug. 2009
	Feb. 2009	Mar. 2009	Apr. 2009	May 2009	June 2009	July 2009	Aug. 2009	
All items .....	0.4	-0.1	0.0	0.1	0.7	0.0	0.4	-1.5
Food .....	-1	-1	-2	-2	.0	-3	.1	.4
Food at home .....	-4	-4	-6	-5	.0	-5	.0	-1.6
Food away from home <sup>1</sup> .....	.3	.1	.3	.1	.1	.1	.1	3.0
Energy .....	3.3	-3.0	-2.4	.2	7.4	-4	4.6	-23.0
Energy commodities .....	6.9	-4.7	-2.6	2.3	16.2	-4	8.5	-30.8
Gasoline (all types) .....	8.3	-4.0	-2.8	3.1	17.3	-8	9.1	-30.0
Fuel oil .....	-3.8	-8.5	-3	-3.3	4.8	-1.5	6.2	-39.9
Energy services .....	.0	-1.4	-2.2	-1.7	-1.2	-3	.0	-10.6
Electricity .....	.5	-.2	-.6	-.4	-1.9	-.6	-.1	-1.2
Utility (piped) gas service .....	-1.6	-4.8	-7.0	-5.7	1.3	.9	.4	-32.7
All items less food and energy .....	.2	.2	.3	.1	.2	.1	.1	1.4
Commodities less food and energy commodities .....	.4	.4	.5	.2	.3	.2	-.3	1.1
New vehicles .....	.8	.6	.4	.5	.7	.5	-1.3	.5
Used cars and trucks .....	-1.7	-1.7	-1	1.0	.9	.0	1.9	-5.4
Apparel .....	1.3	-.2	-.2	-.2	.7	.6	-.1	.6
Medical care commodities .....	.6	.2	.3	.4	.1	-.1	.5	3.7
Services less energy services .....	.1	.1	.2	.1	.1	.0	.2	1.6
Shelter .....	.0	.0	.2	.1	.1	-.2	.1	.9
Transportation services .....	.4	-.1	.3	-.1	-.1	.5	.6	1.4
Medical care services .....	.3	.2	.4	.3	.2	.3	.2	3.2

<sup>1</sup> Not seasonally adjusted.

## **Consumer Price Index Data for August 2009**

### **Energy**

The energy index rose 4.6 percent in August after falling 0.4 percent in July. The energy commodities index rose 8.5 percent as the gasoline index rose 9.1 percent in August following a 0.8 percent decline in July. (Before seasonal adjustment, gasoline prices rose 3.3 percent in August.) The index for energy services was unchanged in August, with a 0.1 percent decline in the electricity index offsetting a 0.4 percent increase in the index for natural gas. Over the past 12 months, the energy index has fallen 23.0 percent, with the gasoline index falling 30.0 percent, the index for natural gas declining 32.7 percent, and the electricity index decreasing 1.2 percent.

### **Food**

The food index rose 0.1 percent in August, with the index for food away from home rising 0.1 percent and the food at home index unchanged. Within the latter group, the index for fruits and vegetables fell 0.7 percent in August following a 0.3 percent decline in July. The index for dairy and related products fell 0.4 percent in August, its ninth consecutive decline, and the index for cereals and bakery products decreased 0.1 percent. Offsetting these declines were increases of 0.4 percent in the indexes for meats, poultry, fish and eggs and for nonalcoholic beverages and a 0.2 percent increase in the index for other food at home. The food at home index has declined 2.5 percent since its November 2008 peak. Over the past 12 months, the food index has risen 0.4 percent, with the food away from home index rising 3.0 percent and the food at home index declining 1.6 percent.

### **All items less food and energy**

The index for all items less food and energy rose 0.1 percent in August, the same increase as in July. Advances in the indexes for used cars and public transportation contributed to the increase. The used cars and trucks index, which was unchanged in July, rose 1.9 percent in August. The public transportation index rose 1.3 percent in August as the airline fares index rose 1.7 percent. Also contributing was an upturn in the lodging away from home index, which rose 0.5 percent in August after declining 2.1 percent in July. This increase drove an upturn in the shelter index, which rose 0.1 percent in August after a 0.2 percent decline in July. The rent index was unchanged and the index for owners' equivalent rent increased 0.1 percent. The medical care index rose 0.3 percent in August after a 0.2 percent increase in July, and the index for recreation edged up 0.1 percent. In contrast to these increases, the index for new vehicles fell 1.3 percent in August, partly due to "cash for clunkers" incentives. Also declining in August were the indexes for apparel, which fell 0.1 percent, and communication, which declined 0.2 percent.

### **Not seasonally adjusted CPI measures**

The Consumer Price Index for All Urban Consumers (CPI-U) decreased 1.5 percent over the last 12 months to an index level of 215.834 (1982-84=100). For the month, the index increased 0.2 percent prior to seasonal adjustment.

The Consumer Price Index for Urban Wage Earners and Clerical Workers (CPI-W) decreased 1.9 percent over the last 12 months to an index level of 211.156 (1982-84=100). For the month, the index increased 0.3 percent prior to seasonal adjustment.

The Chained Consumer Price Index for All Urban Consumers (C-CPI-U) decreased 1.5 percent over the last 12 months. For the month, the index increased 0.2 percent on a not seasonally adjusted basis. Please note that the indexes for the post-2007 period are subject to revision.

---

**The Consumer Price Index for September 2009 is scheduled to be released on Thursday, October 15, 2009, at 8:30 a.m. (EDT).**

## **Facilities for Sensory Impaired**

Information from this release will be made available to sensory impaired individuals upon request.  
Voice phone: 202-691-5200, Federal Relay Services: 1-800-877-8339.

## **Brief Explanation of the CPI**

The Consumer Price Index (CPI) is a measure of the average change in prices over time of goods and services purchased by households. The Bureau of Labor Statistics publishes CPIs for two population groups: (1) the CPI for Urban Wage Earners and Clerical Workers (CPI-W), which covers households of wage earners and clerical workers that comprise approximately 32 percent of the total population and (2) the CPI for All Urban Consumers (CPI-U) and the Chained CPI for All Urban Consumers (C-CPI-U), which cover approximately 87 percent of the total population and include in addition to wage earners and clerical worker households, groups such as professional, managerial, and technical workers, the self-employed, short-term workers, the unemployed, and retirees and others not in the labor force.

The CPIs are based on prices of food, clothing, shelter, and fuels, transportation fares, charges for doctors' and dentists' services, drugs, and other goods and services that people buy for day-to-day living. Prices are collected in 87 urban areas across the country from about 50,000 housing units and approximately 23,000 retail establishments-department stores, supermarkets, hospitals, filling stations, and other types of stores and service establishments. All taxes directly associated with the purchase and use of items are included in the index. Prices of fuels and a few other items are obtained every month in all 87 locations. Prices of most other commodities and services are collected every month in the three largest geographic areas and every other month in other areas. Prices of most goods and services are obtained by personal visits or telephone calls of the Bureau's trained representatives.

In calculating the index, price changes for the various items in each location are averaged together with weights, which represent their importance in the spending of the appropriate population group. Local data are then combined to obtain a U.S. city average. For the CPI-U and CPI-W separate indexes are also published by size of city, by region of the country, for cross-classifications of regions and population-size classes, and for 27 local areas. Area indexes do not measure differences in the level of prices among cities; they only measure the average change in prices for each area since the base period. For the C-CPI-U data are issued only at the national level. It is important to note that the CPI-U and CPI-W are considered final when released, but the C-CPI-U is issued in preliminary form and subject to two annual revisions.

The index measures price change from a designed reference date. For the CPI-U and the CPI-W the reference base is 1982-84 equals 100.0. The reference base for the C-CPI-U is December 1999 equals 100. An increase of 16.5 percent from the reference base, for example, is shown as 116.5. This change can also be expressed in dollars as follows: the price of a base period market basket of goods and services in the CPI has risen from \$10 in 1982-84 to \$11.65.

For further details visit the CPI home page on the Internet at <http://www.bls.gov/cpi/> or contact our CPI Information and Analysis Section on (202) 691-7000.

## Note on Sampling Error in the Consumer Price Index

The CPI is a statistical estimate that is subject to sampling error because it is based upon a sample of retail prices and not the complete universe of all prices. BLS calculates and publishes estimates of the 1-month, 2-month, 6-month and 12-month percent change standard errors annually, for the CPI-U. These standard error estimates can be used to construct confidence intervals for hypothesis testing. For example, the estimated standard error of the 1 month percent change is 0.04 percent for the U.S. All Items Consumer Price Index. This means that if we repeatedly sample from the universe of all retail prices using the same methodology, and estimate a percentage change for each sample, then 95% of these estimates would be within 0.08 percent of the 1 month percentage change based on all retail prices. For example, for a 1-month change of 0.2 percent in the All Items CPI for All Urban Consumers, we are 95 percent confident that the actual percent change based on all retail prices would fall between 0.12 and 0.28 percent. For the latest data, including information on how to use the estimates of standard error, see “Variance Estimates for Price Changes in the Consumer Price Index, January-December 2008”. These data are available on the CPI home page (<http://www.bls.gov/cpi>), or by using the following link <http://www.bls.gov/cpi/cpivar2008.pdf>

## Calculating Index Changes

Movements of the indexes from one month to another are usually expressed as percent changes rather than changes in index points, because index point changes are affected by the level of the index in relation to its base period while percent changes are not. The example below illustrates the computation of index point and percent changes.

Percent changes for 3-month and 6-month periods are expressed as annual rates and are computed according to the standard formula for compound growth rates. These data indicate what the percent change would be if the current rate were maintained for a 12-month period.

### Index Point Change

CPI	202.416
Less previous index	201.800
Equals index point change	.616

### Percent Change

Index point difference	.616
Divided by the previous index	201.800
Equals	0.003
Results multiplied by one hundred	0.003x100
Equals percent change	0.3

## Regions Defined

The states in the four regions shown in Tables 3 and 6 are listed below.

The Northeast--Connecticut, Maine, Massachusetts, New Hampshire, New York, New Jersey, Pennsylvania, Rhode Island, and Vermont.

The Midwest--Illinois, Indiana, Iowa, Kansas, Michigan, Minnesota, Missouri, Nebraska, North Dakota, Ohio, South Dakota, and Wisconsin.

The South--Alabama, Arkansas, Delaware, Florida, Georgia, Kentucky, Louisiana, Maryland, Mississippi, North Carolina, Oklahoma, South Carolina, Tennessee, Texas, Virginia, West Virginia, and the District of Columbia.

The West--Alaska, Arizona, California, Colorado, Hawaii, Idaho, Montana, Nevada, New Mexico, Oregon, Utah, Washington, and Wyoming.

## **A Note on Seasonally Adjusted and Unadjusted Data**

Because price data are used for different purposes by different groups, the Bureau of Labor Statistics publishes seasonally adjusted as well as unadjusted changes each month.

For analyzing general price trends in the economy, seasonally adjusted changes are usually preferred since they eliminate the effect of changes that normally occur at the same time and in about the same magnitude every year--such as price movements resulting from changing climatic conditions, production cycles, model changeovers, holidays, and sales.

The unadjusted data are of primary interest to consumers concerned about the prices they actually pay. Unadjusted data also are used extensively for escalation purposes. Many collective bargaining contract agreements and pension plans, for example, tie compensation changes to the Consumer Price Index before adjustment for seasonal variation.

Seasonal factors used in computing the seasonally adjusted indexes are derived by the X-12-ARIMA Seasonal Adjustment Method. Seasonally adjusted indexes and seasonal factors are computed annually. Each year, the last 5 years of seasonally adjusted data are revised. Data from January 2004 through December 2008 were replaced in January 2009. Exceptions to the usual revision schedule were: the updated seasonal data at the end of 1977 replaced data from 1967 through 1977; and, in January 2002, dependently seasonally adjusted series were revised for January 1987-December 2001 as a result of a change in the aggregation weights for dependently adjusted series. For further information, please see "Aggregation of Dependently Adjusted Seasonally Adjusted Series," in the October 2001 issue of the CPI Detailed Report.

The seasonal movement of all items and 54 other aggregations is derived by combining the seasonal movement of 73 selected components. Each year the seasonal status of every series is reevaluated based upon certain statistical criteria. If any of the 73 components change their seasonal adjustment status from seasonally adjusted to not seasonally adjusted, not seasonally adjusted data will be used in the aggregation of the dependent series for the last 5 years, but the seasonally adjusted indexes will be used before that period. Note: 47 of the 73 components are seasonally adjusted for 2009.

Seasonally adjusted data, including the all items index levels, are subject to revision for up to five years after their original release. For this reason, BLS advises against the use of these data in escalation agreements.

Effective with the calculation of the seasonal factors for 1990, the Bureau of Labor Statistics has used an enhanced seasonal adjustment procedure called Intervention Analysis Seasonal Adjustment for some CPI series. Intervention Analysis Seasonal Adjustment allows for better estimates of seasonally adjusted data. Extreme values and/or sharp movements which might distort the seasonal pattern are estimated and removed from the data prior to calculation of seasonal factors. Beginning with the calculation of seasonal factors for 1996, X-12-ARIMA software was used for Intervention Analysis Seasonal Adjustment.

For the seasonal factors introduced in January 2009, BLS adjusted 29 series using Intervention Analysis Seasonal Adjustment, including selected food and beverage items, motor fuels, electricity and vehicles. For example, this procedure was used for the Motor fuel series to offset the effects of events such as damage to oil refineries from Hurricane Katrina.

For a complete list of Intervention Analysis Seasonal Adjustment series and explanations, please refer to the article “Intervention Analysis Seasonal Adjustment”, located on our website at <http://www.bls.gov/cpi/cpisapage.htm>.

For additional information on seasonal adjustment in the CPI, please write to the Bureau of Labor Statistics, Division of Consumer Prices and Price Indexes, Washington, DC 20212 or contact Jeff Wilson at (202) 691-6968, or by e-mail at [Wilson.Jeff@bls.gov](mailto:Wilson.Jeff@bls.gov). If you have general questions about the CPI, please call our information staff at (202) 691-7000.



**Table 1. Consumer Price Index for All Urban Consumers (CPI-U): U.S. city average, by expenditure category and commodity and service group**

(1982-84=100, unless otherwise noted)

CPI-U Expenditure category	Relative importance, December 2008	Unadjusted indexes		Unadjusted percent change to Aug. 2009 from—		Seasonally adjusted percent change from—		
		July 2009	Aug. 2009	Aug. 2008	July 2009	May to June	June to July	July to Aug.
All items .....	100.000	215.351	215.834	-1.5	0.2	0.7	0.0	0.4
All items (1967=100) .....	-	645.096	646.544	-	-	-	-	-
Food and beverages .....	15.757	217.608	217.701	.6	.0	.1	-.2	.1
Food .....	14.629	217.257	217.350	.4	.0	.0	-.3	.1
Food at home .....	8.156	213.815	213.722	-1.6	.0	.0	-.5	.0
Cereals and bakery products .....	1.150	253.391	252.382	.9	-.4	.0	-.1	-.1
Meats, poultry, fish, and eggs .....	1.898	201.743	202.911	-2.2	.6	-.2	-1.3	.4
Dairy and related products <sup>1</sup> .....	.910	193.118	192.381	-10.4	-.4	-.9	-.6	-.4
Fruits and vegetables .....	1.194	270.940	267.309	-5.6	-1.3	1.1	-.3	-.7
Nonalcoholic beverages and beverage materials .....	.982	162.069	162.953	1.8	.5	.1	-.3	.4
Other food at home .....	2.022	190.967	191.317	2.3	.2	.0	-.3	.2
Sugar and sweets .....	.300	195.126	195.430	4.1	.2	.2	-1.3	.4
Fats and oils .....	.241	201.031	200.578	-1.2	-.2	.6	-.3	.1
Other foods .....	1.481	205.544	206.064	2.5	.3	-.2	-.1	.2
Other miscellaneous foods <sup>1 2</sup> .....	.433	121.990	121.892	.7	-.1	-.5	-.2	-.1
Food away from home <sup>1</sup> .....	6.474	223.345	223.675	3.0	.1	.1	.1	.1
Other food away from home <sup>1 2</sup> .....	.314	156.570	156.697	3.7	.1	.5	.5	.1
Alcoholic beverages .....	1.127	220.850	220.946	2.7	.0	.2	.3	.1
Housing .....	43.421	218.085	217.827	-.6	-.1	.0	-.2	.1
Shelter .....	33.200	250.310	250.248	.9	.0	.1	-.2	.1
Rent of primary residence <sup>3</sup> .....	5.957	248.994	249.029	2.0	.0	.1	.0	.0
Lodging away from home <sup>2</sup> .....	2.478	139.424	137.454	-7.8	-1.4	.3	-2.1	.5
Owners' equivalent rent of primary residence <sup>3 4</sup> .....	24.433	256.872	257.155	1.7	.1	.1	.0	.1
Tenants' and household insurance <sup>1 2</sup> .....	.333	121.298	121.830	2.8	.4	.3	.2	.4
Fuels and utilities .....	5.431	212.961	212.661	-9.8	-.1	-.8	-.1	.4
Household energy .....	4.460	190.534	189.735	-12.7	-.4	-1.0	-.3	.2
Fuel oil and other fuels .....	.301	230.192	237.521	-35.4	3.2	2.0	-1.1	3.9
Gas (piped) and electricity <sup>3</sup> .....	4.159	196.767	195.475	-10.6	-.7	-1.2	-.3	.0
Water and sewer and trash collection services <sup>2</sup> .....	.971	161.403	163.136	5.8	1.1	.4	.6	.8
Household furnishings and operations .....	4.790	129.267	128.304	.2	-.7	.0	-.1	-.6
Household operations <sup>1 2</sup> .....	.781	149.983	150.494	.9	.3	.4	.0	.3
Apparel .....	3.691	115.620	117.130	.6	1.3	.7	.6	-.1
Men's and boys' apparel .....	.923	109.744	110.835	.6	1.0	-.5	-.7	.6
Women's and girls' apparel .....	1.541	101.688	103.991	-.2	2.3	1.6	1.2	-.3
Infants' and toddlers' apparel .....	.183	111.022	113.673	3.8	2.4	2.2	-.7	1.2
Footwear .....	.688	124.405	125.292	2.7	.7	.2	1.1	-.2
Transportation .....	15.314	182.798	184.386	-10.8	.9	4.2	.2	2.3
Private transportation .....	14.189	178.330	179.987	-10.8	.9	4.5	.1	2.4
New and used motor vehicles <sup>2</sup> .....	6.931	93.413	93.126	-.1	-.3	.4	.3	-.4
New vehicles .....	4.480	136.055	134.080	.5	-1.5	.7	.5	-1.3
Used cars and trucks .....	1.628	125.061	128.028	-5.4	2.4	.9	.0	1.9
Motor fuel .....	3.164	217.860	225.089	-30.5	3.3	17.2	-.4	8.8
Gasoline (all types) .....	2.964	217.945	225.179	-30.0	3.3	17.3	-.8	9.1
Motor vehicle parts and equipment <sup>1</sup> .....	.382	133.729	133.531	2.5	-.1	-.1	-.4	-.1
Motor vehicle maintenance and repair <sup>1</sup> .....	1.188	243.031	243.494	3.1	.2	.1	.1	.2
Public transportation .....	1.125	238.932	238.997	-11.0	.0	-.5	1.9	1.3
Medical care .....	6.390	375.739	376.537	3.3	.2	.2	.2	.3
Medical care commodities .....	1.625	304.229	305.797	3.7	.5	.1	-.1	.5
Medical care services .....	4.765	397.868	398.303	3.2	.1	.2	.3	.2
Professional services .....	2.702	320.076	320.252	2.5	.1	.3	.1	.1
Hospital and related services <sup>3</sup> .....	1.545	568.315	570.150	6.5	.3	.4	.7	.5

See footnotes at end of table.

**Table 1. Consumer Price Index for All Urban Consumers (CPI-U): U.S. city average, by expenditure category and commodity and service group-Continued**

(1982-84=100, unless otherwise noted)

CPI-U Expenditure category	Relative importance, December 2008	Unadjusted indexes		Unadjusted percent change to Aug. 2009 from—		Seasonally adjusted percent change from—			
		July 2009	Aug. 2009	Aug. 2008	July 2009	May to June	June to July	July to Aug.	
Recreation <sup>2</sup> .....	5.741	114.619	114.755	0.9	0.1	0.5	0.0	0.1	
Video and audio <sup>2</sup> .....	1.822	101.614	101.474	-1.0	-1	.4	-.2	-.2	
Education and communication <sup>2</sup> .....	6.301	126.914	128.128	2.8	1.0	.2	.3	.2	
Education <sup>2</sup> .....	3.107	189.184	193.161	5.4	2.1	.4	.5	.5	
Educational books and supplies .....	.221	481.768	490.102	6.8	1.7	1.2	1.2	.6	
Tuition, other school fees, and childcare .....	2.886	543.810	555.402	5.3	2.1	.3	.5	.5	
Communication <sup>2</sup> .....	3.194	85.056	84.913	.3	-.2	-.1	.1	-.2	
Information and information processing <sup>1 2</sup> .....	3.022	81.991	81.835	.0	-.2	-.2	.1	-.2	
Telephone services <sup>1 2</sup> .....	2.408	102.643	102.674	1.4	.0	-.1	.5	.0	
Information technology, hardware and services <sup>1 5</sup> .....	.614	9.604	9.499	-5.1	-1.1	-.5	-1.3	-1.1	
Personal computers and peripheral equipment <sup>1 6</sup> .....	.214	80.838	78.576	-15.4	-2.8	-1.1	-3.2	-2.8	
Other goods and services .....	3.386	372.894	372.699	7.4	-.1	.3	.8	.1	
Tobacco and smoking products <sup>1</sup> .....	.776	762.907	763.634	27.8	.1	.8	2.2	.1	
Personal care .....	2.610	204.571	204.352	1.4	-.1	.1	.2	.1	
Personal care products <sup>1</sup> .....	.651	162.887	162.476	2.0	-.3	-.5	-.4	-.3	
Personal care services <sup>1</sup> .....	.647	227.325	227.580	1.5	.1	.0	-.1	.1	
Miscellaneous personal services .....	1.074	344.367	345.137	1.2	.2	.4	.5	.2	
<b>Commodity and service group</b>									
Commodities .....	39.556	170.483	171.081	-4.5	.4	1.8	.0	.8	
Food and beverages .....	15.757	217.608	217.701	.6	.0	.1	-.2	.1	
Commodities less food and beverages .....	23.799	145.742	146.528	-7.4	.5	2.9	.1	1.2	
Nondurables less food and beverages .....	13.289	181.755	184.366	-11.1	1.4	4.9	.5	3.1	
Apparel .....	3.691	115.620	117.130	.6	1.3	.7	.6	-.1	
Nondurables less food, beverages, and apparel .....	9.598	227.038	230.396	-14.3	1.5	6.6	.2	4.2	
Durables .....	10.510	109.924	109.129	-1.5	-.7	.3	.0	-.6	
Services .....	60.444	259.992	260.355	.7	.1	.1	.0	.2	
Rent of shelter <sup>4</sup> .....	32.867	260.935	260.858	.9	.0	.0	-.2	.1	
Tenants' and household insurance <sup>1 2</sup> .....	.333	121.298	121.830	2.8	.4	.3	.2	.4	
Gas (piped) and electricity <sup>3</sup> .....	4.159	196.767	195.475	-10.6	-.7	-1.2	-.3	.0	
Water and sewer and trash collection services <sup>2</sup> .....	.971	161.403	163.136	5.8	1.1	.4	.6	.8	
Household operations <sup>1 2</sup> .....	.781	149.983	150.494	.9	.3	.4	.0	.3	
Transportation services .....	5.567	251.184	252.234	1.4	.4	-.1	.5	.6	
Medical care services .....	4.765	397.868	398.303	3.2	.1	.2	.3	.2	
Other services .....	11.002	303.761	305.890	2.7	.7	.4	.3	.3	
<b>Special indexes</b>									
All items less food .....	85.371	215.069	215.617	-1.8	.3	.9	.0	.5	
All items less shelter .....	66.800	204.069	204.776	-2.6	.3	1.1	.1	.6	
All items less medical care .....	93.610	207.388	207.855	-1.8	.2	.8	.0	.5	
Commodities less food .....	24.926	148.386	149.155	-7.0	.5	2.7	.1	1.2	
Nondurables less food .....	14.416	184.090	186.552	-10.2	1.3	4.5	.5	2.9	
Nondurables less food and apparel .....	10.726	225.410	228.446	-13.0	1.3	6.1	.2	3.8	
Nondurables .....	29.046	199.746	201.191	-5.5	.7	2.4	.1	1.6	
Services less rent of shelter <sup>4</sup> .....	27.577	278.747	279.697	.4	.3	.0	.3	.4	
Services less medical care services .....	55.679	248.963	249.316	.5	.1	.0	.0	.2	
Energy .....	7.624	201.938	204.971	-23.0	1.5	7.4	-.4	4.6	
All items less energy .....	92.376	218.421	218.642	1.3	.1	.2	.0	.1	
All items less food and energy .....	77.746	219.350	219.596	1.4	.1	.2	.1	.1	
Commodities less food and energy commodities .....	21.461	141.463	141.310	1.1	-.1	.3	.2	-.3	
Energy commodities .....	3.465	219.922	227.204	-30.8	3.3	16.2	-.4	8.5	
Services less energy services .....	56.285	266.484	267.008	1.6	.2	.1	.0	.2	
Purchasing power of the consumer dollar (1982-84=\$1.00) .....	-	\$.464	\$.463	-	-	-	-	-	
Purchasing power of the consumer dollar (1967=\$1.00) .....	-	\$.155	\$.155	-	-	-	-	-	

<sup>1</sup> Not seasonally adjusted.

<sup>2</sup> Indexes on a December 1997=100 base.

<sup>3</sup> This index series was calculated using a Laspeyres estimator. All other item stratum index series were calculated using a geometric means estimator.

<sup>4</sup> Indexes on a December 1982=100 base.

<sup>5</sup> Indexes on a December 1988=100 base.

<sup>6</sup> Indexes on a December 2007=100 base.

- Data not available.

NOTE: Index applies to a month as a whole, not to any specific date.

**Table 2. Consumer Price Index for All Urban Consumers (CPI-U): Seasonally adjusted U.S. city average, by expenditure category and commodity and service group**

(1982-84=100, unless otherwise noted)

CPI-U	Seasonally adjusted indexes				Seasonally adjusted annual rate percent change for					
					3 months ended—			6 months ended—		
	May 2009	June 2009	July 2009	Aug. 2009	Nov. 2008	Feb. 2009	May 2009	Aug. 2009	Feb. 2009	Aug. 2009
<b>Expenditure category</b>										
All items .....	212.876	214.459	214.469	215.428	-9.4	-0.5	-0.2	4.9	-5.0	2.3
Food and beverages .....	217.965	218.094	217.638	217.829	4.6	.1	-2.0	-2	2.3	-1.1
Food .....	217.738	217.838	217.291	217.478	4.5	.0	-2.2	-5	2.2	-1.4
Food at home .....	214.929	214.999	213.876	213.951	3.6	-2.8	-5.5	-1.8	.4	-3.7
Cereals and bakery products .....	251.645	251.576	251.380	251.049	9.2	.1	-4.2	-9	4.5	-2.6
Meats, poultry, fish, and eggs .....	204.679	204.365	201.738	202.601	3.9	-1.5	-6.9	-4.0	1.1	-5.5
Dairy and related products <sup>1</sup> .....	196.055	194.197	193.118	192.381	-3.0	-15.1	-15.6	-7.3	-9.3	-11.5
Fruits and vegetables .....	273.037	276.092	275.379	273.410	-10.1	-9.6	-3.4	.5	-9.8	-1.4
Nonalcoholic beverages and beverage materials .....	162.848	162.993	162.431	163.008	9.5	-1.5	-.8	.4	3.9	-.2
Other food at home .....	190.643	190.637	190.071	190.494	9.7	4.0	-3.6	-.3	6.8	-2.0
Sugar and sweets .....	196.340	196.818	194.193	194.991	11.0	10.0	-1.3	-2.7	10.5	-2.0
Fats and oils .....	199.782	201.067	200.428	200.546	9.9	-7.7	-7.5	1.5	.7	-3.1
Other foods .....	205.011	204.694	204.528	204.958	9.4	4.8	-3.5	-.1	7.1	-1.8
Other miscellaneous foods <sup>1 2</sup> .....	122.838	122.224	121.990	121.892	8.6	-3.1	.8	-3.0	2.6	-1.1
Food away from home <sup>1</sup> .....	223.023	223.163	223.345	223.675	5.6	3.5	1.9	1.2	4.6	1.5
Other food away from home <sup>1 2</sup> .....	155.099	155.841	156.570	156.697	7.7	2.0	1.0	4.2	4.8	2.6
Alcoholic beverages .....	219.601	220.105	220.815	221.072	5.6	1.8	.8	2.7	3.7	1.8
Housing .....	217.056	216.984	216.612	216.726	-.7	.0	-1.0	-.6	-.4	-.8
Shelter .....	249.680	249.861	249.410	249.658	1.8	.7	1.3	.0	1.3	.6
Rent of primary residence <sup>3</sup> .....	249.233	249.374	249.293	249.266	3.4	2.6	1.9	.1	3.0	1.0
Lodging away from home <sup>2</sup> .....	134.136	134.507	131.742	132.411	-5.9	-13.2	-6.9	-5.0	-9.6	-6.0
Owners' equivalent rent of primary residence <sup>3 4</sup> .....	257.003	257.138	257.073	257.278	2.3	1.8	2.1	.4	2.1	1.2
Tenants' and household insurance <sup>1 2</sup> .....	120.728	121.083	121.298	121.830	5.8	1.5	.1	3.7	3.6	1.9
Fuels and utilities .....	207.903	206.342	206.046	206.783	-16.1	-4.8	-16.1	-2.1	-10.6	-9.4
Household energy .....	185.399	183.526	182.927	183.374	-20.1	-6.2	-20.6	-4.3	-13.4	-12.8
Fuel oil and other fuels .....	220.321	224.706	222.296	231.023	-58.3	-41.5	-41.1	20.9	-50.6	-15.6
Gas (piped) and electricity <sup>3</sup> .....	191.671	189.362	188.839	188.839	-15.5	-2.9	-19.0	-5.8	-9.4	-12.6
Water and sewer and trash collection services <sup>2</sup> .....	159.821	160.401	161.408	162.756	6.5	2.4	7.0	7.6	4.4	7.3
Household furnishings and operations .....	129.413	129.428	129.254	128.471	1.7	.9	1.3	-2.9	1.3	-.8
Household operations <sup>1 2</sup> .....	149.468	149.995	149.983	150.494	2.2	.4	-1.8	2.8	1.3	.5
Apparel .....	119.345	120.183	120.865	120.756	-3.5	3.9	-2.3	4.8	.1	1.2
Men's and boys' apparel .....	114.561	114.009	113.251	113.938	-4.2	16.1	-5.9	-2.2	5.5	-4.1
Women's and girls' apparel .....	106.667	108.388	109.695	109.390	-8.2	.3	-2.6	10.6	-4.1	3.8
Infants' and toddlers' apparel .....	113.149	115.667	114.831	116.235	6.7	-3.7	1.3	11.4	1.4	6.2
Footwear .....	126.182	126.438	127.790	127.504	3.0	.5	3.1	4.3	1.7	3.7
Transportation .....	171.635	178.843	179.180	183.312	-45.7	-7.4	-2.6	30.1	-29.1	12.6
Private transportation .....	167.234	174.831	174.949	179.110	-47.1	-6.5	-2.0	31.6	-29.7	13.6
New and used motor vehicles <sup>2</sup> .....	92.847	93.227	93.501	93.155	-6.9	1.7	3.7	1.3	-2.7	2.5
New vehicles .....	135.284	136.179	136.826	135.030	-6.3	3.1	6.4	-.7	-1.7	2.8
Used cars and trucks .....	122.788	123.851	123.848	126.157	-16.0	-11.9	-3.1	11.4	-14.0	3.9
Motor fuel .....	173.872	203.703	202.924	220.836	-85.0	-28.4	-16.8	160.2	-67.2	47.2
Gasoline (all types) .....	173.954	204.131	202.498	220.967	-85.4	-26.6	-14.1	160.4	-67.2	49.6
Motor vehicle parts and equipment <sup>1</sup> .....	134.347	134.270	133.729	133.531	8.3	3.5	.7	-2.4	5.9	-.9
Motor vehicle maintenance and repair <sup>1</sup> .....	242.488	242.683	243.031	243.494	5.0	4.5	1.3	1.7	4.8	1.5
Public transportation .....	228.210	227.003	231.418	234.384	-22.7	-18.4	-10.5	11.3	-20.6	-.2
Medical care .....	374.402	375.203	375.851	376.919	2.7	4.3	3.5	2.7	3.5	3.1
Medical care commodities .....	304.426	304.820	304.406	306.029	3.3	5.6	3.6	2.1	4.4	2.9
Medical care services .....	395.884	396.846	397.947	398.742	2.5	3.8	3.5	2.9	3.2	3.2
Professional services .....	318.499	319.339	319.810	320.262	2.6	2.4	2.8	2.2	2.5	2.5
Hospital and related services <sup>3</sup> .....	563.594	565.707	569.494	572.422	4.2	8.5	6.9	6.4	6.3	6.6

See footnotes at end of table.

**Table 2. Consumer Price Index for All Urban Consumers (CPI-U): Seasonally adjusted U.S. city average, by expenditure category and commodity and service group-Continued**

(1982-84=100, unless otherwise noted)

CPI-U Expenditure category	Seasonally adjusted indexes				Seasonally adjusted annual rate percent change for					
					3 months ended—			6 months ended—		
	May 2009	June 2009	July 2009	Aug. 2009	Nov. 2008	Feb. 2009	May 2009	Aug. 2009	Feb. 2009	Aug. 2009
<b>Expenditure category</b>										
Recreation <sup>2</sup> .....	114.044	114.592	114.612	114.731	1.5	1.0	-1.6	2.4	1.3	0.4
Video and audio <sup>2</sup> .....	101.488	101.920	101.741	101.530	-1.8	-1.9	-.6	.2	-1.9	-.2
Education and communication <sup>2</sup> .....	127.169	127.366	127.751	127.967	2.2	3.3	3.1	2.5	2.7	2.8
Education <sup>2</sup> .....	189.968	190.734	191.709	192.686	4.9	5.1	5.9	5.8	5.0	5.9
Educational books and supplies .....	474.581	480.501	486.256	489.280	4.2	4.5	5.7	13.0	4.4	9.3
Tuition, other school fees, and childcare .....	546.880	548.730	551.241	554.000	5.0	5.1	6.0	5.3	5.1	5.6
Communication <sup>2</sup> .....	85.049	84.972	85.053	84.909	-4	1.6	.5	-.7	.6	-.1
Information and information processing <sup>1 2</sup> .....	82.038	81.909	81.991	81.835	-4	1.6	-.1	-1.0	.6	-.5
Telephone services <sup>1 2</sup> .....	102.267	102.182	102.643	102.674	.9	1.4	1.5	1.6	1.2	1.5
Information technology, hardware and services <sup>1 5</sup> .....	9.775	9.731	9.604	9.499	-5.7	2.4	-5.9	-10.8	-1.7	-8.4
Personal computers and peripheral equipment <sup>1 6</sup> .....	84.366	83.476	80.838	78.576	-15.9	-5.7	-14.3	-24.8	-10.9	-19.7
Other goods and services .....	369.237	370.235	373.084	373.425	1.9	2.0	22.3	4.6	2.0	13.1
Tobacco and smoking products <sup>1</sup> .....	740.311	746.283	762.907	763.634	1.7	8.1	114.7	13.2	4.8	55.9
Personal care .....	204.078	204.231	204.714	204.899	2.0	.3	1.5	1.6	1.2	1.6
Personal care products <sup>1</sup> .....	163.051	162.301	162.887	162.476	4.5	3.8	1.3	-1.4	4.1	.0
Personal care services <sup>1</sup> .....	227.607	227.572	227.325	227.580	3.7	-5	3.1	.0	1.6	1.5
Miscellaneous personal services .....	341.763	343.178	344.739	345.448	-2	.4	.3	4.4	.1	2.3
<b>Commodity and service group</b>										
Commodities .....	166.959	169.920	169.875	171.236	-21.8	-2.9	-.6	10.6	-12.9	4.9
Food and beverages .....	217.965	218.094	217.638	217.829	4.6	.1	-2.0	-.2	2.3	-1.1
Commodities less food and beverages .....	140.736	144.765	144.891	146.689	-34.2	-4.8	.4	18.0	-20.9	8.8
Nondurables less food and beverages .....	170.782	179.090	179.986	185.567	-49.9	-5.8	-4.8	39.4	-31.3	15.2
Apparel .....	119.345	120.183	120.865	120.756	-3.5	3.9	-2.3	4.8	.1	1.2
Nondurables less food, beverages, and apparel .....	206.581	220.257	220.790	230.120	-59.4	-8.7	-5.3	54.0	-39.1	20.8
Durables .....	109.576	109.957	109.926	109.238	-5.5	-1.3	2.2	-1.2	-3.4	.5
Services .....	258.637	258.780	258.833	259.344	.4	1.3	.0	1.1	.8	.5
Rent of shelter <sup>4</sup> .....	260.188	260.267	259.779	260.033	2.1	.6	1.1	-.2	1.4	.4
Tenants' and household insurance <sup>1 2</sup> .....	120.728	121.083	121.298	121.830	5.8	1.5	.1	3.7	3.6	1.9
Gas (piped) and electricity <sup>3</sup> .....	191.671	189.362	188.839	188.839	-15.5	-2.9	-19.0	-5.8	-9.4	-12.6
Water and sewer and trash collection services <sup>2</sup> .....	159.821	160.401	161.408	162.756	6.5	2.4	7.0	7.6	4.4	7.3
Household operations <sup>1 2</sup> .....	149.468	149.995	149.983	150.494	2.2	.4	-1.8	2.8	1.3	.5
Transportation services .....	248.944	248.652	249.855	251.455	-1.6	2.7	.6	4.1	.5	2.3
Medical care services .....	395.884	396.846	397.947	398.742	2.5	3.8	3.5	2.9	3.2	3.2
Other services .....	302.653	303.902	304.916	305.733	2.2	2.8	1.5	4.1	2.5	2.8
<b>Special indexes</b>										
All items less food .....	212.111	213.936	214.037	215.123	-11.5	-.6	.1	5.8	-6.2	2.9
All items less shelter .....	200.829	202.989	203.183	204.437	-14.3	-1.0	-1.0	7.4	-7.9	3.1
All items less medical care .....	204.892	206.490	206.476	207.422	-10.1	-.8	-.5	5.0	-5.6	2.2
Commodities less food .....	143.471	147.413	147.555	149.315	-32.9	-4.6	.4	17.3	-20.0	8.5
Nondurables less food .....	173.715	181.572	182.401	187.699	-47.5	-5.0	-4.4	36.3	-29.4	14.2
Nondurables less food and apparel .....	206.725	219.267	219.772	228.214	-56.1	-7.2	-5.1	48.5	-36.2	18.7
Nondurables .....	193.862	198.515	198.640	201.800	-27.8	-2.0	-4.0	17.4	-15.9	6.2
Services less rent of shelter <sup>4</sup> .....	276.222	276.247	276.955	277.946	-1.0	2.1	-2.0	2.5	.5	.2
Services less medical care services .....	247.547	247.530	247.503	248.063	.5	1.1	-.6	.8	.8	.1
Energy .....	178.340	191.584	190.905	199.667	-67.0	-17.4	-18.9	57.1	-47.8	12.9
All items less energy .....	218.126	218.507	218.588	218.743	1.2	1.2	1.6	1.1	1.2	1.4
All items less food and energy .....	218.910	219.344	219.543	219.692	.6	1.5	2.3	1.4	1.1	1.9
Commodities less food and energy commodities .....	141.817	142.300	142.612	142.179	-2.2	1.2	4.4	1.0	-.5	2.7
Energy commodities .....	177.449	206.131	205.261	222.805	-83.9	-29.4	-18.7	148.5	-66.3	42.2
Services less energy services .....	265.491	265.873	265.982	266.543	1.7	1.6	1.5	1.6	1.6	1.6

<sup>1</sup> Not seasonally adjusted.

<sup>2</sup> Indexes on a December 1997=100 base.

<sup>3</sup> This index series was calculated using a Laspeyres estimator. All other item stratum index series were calculated using a geometric means estimator.

<sup>4</sup> Indexes on a December 1982=100 base.

<sup>5</sup> Indexes on a December 1988=100 base.

<sup>6</sup> Indexes on a December 2007=100 base.

NOTE: Index applies to a month as a whole, not to any specific date.

**Table 3. Consumer Price Index for All Urban Consumers (CPI-U): Selected areas, all items index**

(1982-84=100, unless otherwise noted)

CPI-U	Pricing schedule 1	All items									
		Indexes				Percent change to Aug.2009 from—			Percent change to July2009 from—		
		May 2009	June 2009	July 2009	Aug. 2009	Aug. 2008	June 2009	July 2009	July 2008	May 2009	June 2009
U.S. city average .....	M	213.856	215.693	215.351	215.834	-1.5	0.1	0.2	-2.1	0.7	-0.2
<b>Region and area size<sup>2</sup></b>											
Northeast urban .....	M	228.136	229.930	230.154	230.883	-1.2	.4	.3	-1.9	.9	.1
Size A - More than 1,500,000 .....	M	230.611	232.058	232.416	233.314	-1.2	.5	.4	-1.7	.8	.2
Size B/C - 50,000 to 1,500,000 <sup>3</sup> .....	M	134.857	136.488	136.417	136.598	-1.4	.1	.1	-2.3	1.2	-1.1
Midwest urban .....	M	203.195	205.350	204.814	205.632	-1.8	.1	.4	-2.5	.8	-3.3
Size A - More than 1,500,000 .....	M	204.443	206.308	205.656	206.591	-1.8	.1	.5	-2.5	.6	-3.3
Size B/C - 50,000 to 1,500,000 <sup>3</sup> .....	M	129.967	131.640	131.366	131.748	-1.7	.1	.3	-2.4	1.1	-2.2
Size D - Nonmetropolitan (less than 50,000) .....	M	198.911	201.157	200.908	201.823	-2.1	.3	.5	-2.7	1.0	-1.1
South urban .....	M	207.265	209.343	208.819	209.000	-1.6	-2.2	.1	-2.1	.7	-3.3
Size A - More than 1,500,000 .....	M	209.235	211.390	211.034	211.436	-1.4	.0	.2	-2.0	.9	-2.2
Size B/C - 50,000 to 1,500,000 <sup>3</sup> .....	M	131.777	133.056	132.736	132.729	-1.7	-2.2	.0	-2.1	.7	-2.2
Size D - Nonmetropolitan (less than 50,000) .....	M	209.563	211.815	210.491	210.899	-1.7	-4.4	.2	-2.2	.4	-6.6
West urban .....	M	218.567	219.865	219.484	219.884	-1.3	.0	.2	-2.0	.4	-2.2
Size A - More than 1,500,000 .....	M	222.659	223.908	223.498	224.072	-1.1	.1	.3	-1.8	.4	-2.2
Size B/C - 50,000 to 1,500,000 <sup>3</sup> .....	M	131.990	132.952	132.774	132.756	-1.8	-1.1	.0	-2.4	.6	-1.1
<b>Size classes</b>											
A <sup>4</sup> .....	M	195.745	197.214	196.987	197.614	-1.3	.2	.3	-2.0	.6	-1.1
B/C <sup>3</sup> .....	M	131.876	133.220	132.975	133.069	-1.7	-1.1	.1	-2.3	.8	-2.2
D .....	M	206.717	208.543	207.784	208.369	-1.8	-1.1	.3	-2.2	.5	-4.4
<b>Selected local areas<sup>5</sup></b>											
Chicago-Gary-Kenosha, IL-IN-WI .....	M	209.809	211.010	210.906	211.441	-2.1	.2	.3	-3.0	.5	.0
Los Angeles-Riverside-Orange County, CA ...	M	222.522	223.906	224.010	224.507	-1.7	.3	.2	-2.6	.7	.0
New York-Northern N.J.-Long Island, NY-NJ-CT-PA .....	M	235.975	237.172	237.600	238.282	-9.9	.5	.3	-1.1	.7	.2
Boston-Brockton-Nashua, MA-NH-ME-CT .....	1	231.891	-	233.018	-	-	-	-	-3.4	.5	-
Cleveland-Akron, OH .....	1	200.196	-	200.558	-	-	-	-	-3.1	.2	-
Dallas-Fort Worth, TX .....	1	199.311	-	200.663	-	-	-	-	-2.8	.7	-
Washington-Baltimore, DC-MD-VA-WV <sup>6</sup> .....	1	139.311	-	140.810	-	-	-	-	-9.9	1.1	-
Atlanta, GA .....	2	-	203.585	-	203.351	-3.8	-1.1	-	-	-	-
Detroit-Ann Arbor-Flint, MI .....	2	-	204.537	-	204.673	-2.3	.1	-	-	-	-
Houston-Galveston-Brazoria, TX .....	2	-	192.325	-	191.687	-5.5	-3.3	-	-	-	-
Miami-Fort Lauderdale, FL .....	2	-	221.485	-	221.306	-1.8	-1.1	-	-	-	-
Philadelphia-Wilmington-Atlantic City, PA-NJ-DE-MD .....	2	-	223.810	-	226.039	-1.0	1.0	-	-	-	-
San Francisco-Oakland-San Jose, CA .....	2	-	225.692	-	225.801	.2	.0	-	-	-	-
Seattle-Tacoma-Bremerton, WA .....	2	-	227.257	-	227.138	-3.3	-1.1	-	-	-	-

<sup>1</sup> Foods, fuels, and several other items priced every month in all areas; most other goods and services priced as indicated:

M - Every month.

1 - January, March, May, July, September, and November.

2 - February, April, June, August, October, and December.

<sup>2</sup> Regions defined as the four Census regions. See technical notes.

<sup>3</sup> Indexes on a December 1996=100 base.

<sup>4</sup> Indexes on a December 1986=100 base.

<sup>5</sup> In addition, the following metropolitan areas are published semiannually and appear in Tables 34 and 39 of the January and July issues of the CPI Detailed Report: Anchorage, AK; Cincinnati-Hamilton, OH-KY-IN; Denver-Boulder-Greeley, CO; Honolulu, HI; Kansas City, MO-KS; Milwaukee-Racine, WI; Minneapolis-St. Paul, MN-WI; Phoenix-Mesa, AZ; Pittsburgh, PA; Portland-Salem, OR-WA; St. Louis, MO-IL; San Diego, CA;

Tampa-St. Petersburg-Clearwater, FL.

<sup>6</sup> Indexes on a November 1996=100 base.

- Data not available.

NOTE: Local area indexes are byproducts of the national CPI program. Each local index has a smaller sample size than the national index and is, therefore, subject to substantially more sampling and other measurement error. As a result, local area indexes show greater volatility than the national index, although their long-term trends are similar. Therefore, the Bureau of Labor Statistics strongly urges users to consider adopting the national average CPI for use in their escalator clauses.

NOTE: Index applies to a month as a whole, not to any specific date.

**Table 4. Consumer Price Index for Urban Wage Earners and Clerical Workers (CPI-W): U.S. city average, by expenditure category and commodity and service group**

(1982-84=100, unless otherwise noted)

CPI-W Expenditure category	Relative importance, December 2008	Unadjusted indexes		Unadjusted percent change to Aug. 2009 from—		Seasonally adjusted percent change from—		
		July 2009	Aug. 2009	Aug. 2008	July 2009	May to June	June to July	July to Aug.
All items .....	100.000	210.526	211.156	-1.9	0.3	0.9	0.0	0.6
All items (1967=100) .....	-	627.093	628.970	-	-	-	-	-
Food and beverages .....	16.942	216.805	216.957	.5	.1	.0	-.2	.1
Food .....	15.865	216.384	216.539	.3	.1	.0	-.3	.1
Food at home .....	9.201	212.628	212.623	-1.7	.0	.0	-.5	.0
Cereals and bakery products .....	1.249	253.969	252.932	.8	-.4	.0	-.1	-.1
Meats, poultry, fish, and eggs .....	2.315	201.261	202.483	-2.3	.6	-.3	-1.3	.4
Dairy and related products <sup>1</sup> .....	.992	191.783	191.048	-10.8	-.4	-.9	-.6	-.4
Fruits and vegetables .....	1.266	269.316	265.730	-5.8	-1.3	1.3	-.1	-.9
Nonalcoholic beverages and beverage materials .....	1.167	161.650	162.433	2.1	.5	.0	-.4	.3
Other food at home .....	2.212	190.235	190.704	2.3	.2	.0	-.3	.3
Sugar and sweets .....	.304	194.005	194.511	4.1	.3	.5	-1.4	.5
Fats and oils .....	.274	201.666	201.199	-1.2	-.2	.7	-.4	.1
Other foods .....	1.634	205.549	206.210	2.5	.3	-.2	-.1	.3
Other miscellaneous foods <sup>1 2</sup> .....	.472	122.119	122.217	.6	.1	-.5	-.3	.1
Food away from home <sup>1</sup> .....	6.664	223.408	223.789	3.1	.2	.0	.1	.2
Other food away from home <sup>1 2</sup> .....	.233	156.904	156.769	4.3	-.1	.4	1.2	-.1
Alcoholic beverages .....	1.077	221.517	221.618	3.1	.0	.2	.4	.2
Housing .....	41.313	214.029	213.824	-.4	-.1	-.1	-.1	.0
Shelter .....	31.224	243.248	243.279	1.4	.0	.1	-.1	.1
Rent of primary residence <sup>3</sup> .....	8.279	247.573	247.601	1.9	.0	.0	.0	.0
Lodging away from home <sup>2</sup> .....	1.209	140.873	138.543	-6.6	-1.7	.4	-1.6	.2
Owners' equivalent rent of primary residence <sup>3 4</sup> .....	21.430	232.723	232.977	1.6	.1	.0	.0	.1
Tenants' and household insurance <sup>1 2</sup> .....	.306	121.765	122.254	2.8	.4	.3	.2	.4
Fuels and utilities .....	6.030	212.276	211.808	-9.2	-.2	-.7	-.1	.3
Household energy .....	4.996	189.082	188.125	-12.0	-.5	-.9	-.3	.1
Fuel oil and other fuels .....	.283	233.018	239.435	-34.1	2.8	1.4	-1.1	3.7
Gas (piped) and electricity <sup>3</sup> .....	4.713	195.547	194.211	-10.3	-.7	-1.0	-.2	-.1
Water and sewer and trash collection services <sup>2</sup> .....	1.035	161.790	163.567	5.9	1.1	.4	.6	.9
Household furnishings and operations .....	4.059	125.160	124.219	.2	-.8	-.1	-.1	-.6
Household operations <sup>1 2</sup> .....	.360	152.577	153.667	1.0	.7	.4	-.1	.7
Apparel .....	3.979	115.516	117.095	.8	1.4	.7	.6	.0
Men's and boys' apparel .....	1.024	110.558	111.629	1.0	1.0	-.6	-.4	.7
Women's and girls' apparel .....	1.568	101.289	103.727	-.8	2.4	1.6	1.3	-.2
Infants' and toddlers' apparel .....	.249	113.744	116.482	4.4	2.4	2.3	-.6	.8
Footwear .....	.840	125.046	125.880	3.2	.7	.5	1.0	-.2
Transportation .....	17.067	180.419	182.541	-12.2	1.2	4.8	.1	2.7
Private transportation .....	16.284	177.197	179.368	-12.2	1.2	5.1	.0	2.8
New and used motor vehicles <sup>2</sup> .....	7.627	90.973	91.129	-1.3	.2	.6	.2	.1
New vehicles .....	4.057	137.082	135.130	.4	-1.4	.8	.5	-1.3
Used cars and trucks .....	2.863	125.817	128.781	-5.4	2.4	.9	.0	1.9
Motor fuel .....	4.029	218.560	225.797	-30.5	3.3	17.2	-.5	8.8
Gasoline (all types) .....	3.770	218.757	226.007	-30.0	3.3	17.4	-.9	9.1
Motor vehicle parts and equipment <sup>1</sup> .....	.482	133.787	133.587	2.6	-.1	-.1	-.4	-.1
Motor vehicle maintenance and repair <sup>1</sup> .....	1.242	245.421	245.871	3.1	.2	.0	.1	.2
Public transportation .....	.784	236.963	237.029	-10.5	.0	-.2	2.0	1.2
Medical care .....	5.355	376.161	377.007	3.4	.2	.2	.2	.3
Medical care commodities .....	1.320	295.871	297.379	3.7	.5	.1	-.2	.5
Medical care services .....	4.035	399.677	400.204	3.3	.1	.2	.3	.2
Professional services .....	2.234	322.759	322.964	2.6	.1	.3	.1	.1
Hospital and related services <sup>3</sup> .....	1.338	565.448	567.545	6.7	.4	.4	.7	.6

See footnotes at end of table.

**Table 4. Consumer Price Index for Urban Wage Earners and Clerical Workers (CPI-W): U.S. city average, by expenditure category and commodity and service group-Continued**

(1982-84=100, unless otherwise noted)

CPI-W Expenditure category	Relative importance, December 2008	Unadjusted indexes		Unadjusted percent change to Aug. 2009 from—		Seasonally adjusted percent change from—		
		July 2009	Aug. 2009	Aug. 2008	July 2009	May to June	June to July	July to Aug.
<b>Expenditure category</b>								
Recreation <sup>2</sup> .....	5.454	111.416	111.453	0.7	0.0	0.4	0.0	0.0
Video and audio <sup>2</sup> .....	1.982	101.982	101.867	-8	-1	.5	-1	-2
Education and communication <sup>2</sup> .....	6.221	122.699	123.579	2.3	.7	.1	.3	.1
Education <sup>2</sup> .....	2.527	186.596	190.222	5.2	1.9	.4	.6	.4
Educational books and supplies .....	.219	485.218	493.615	7.1	1.7	1.3	1.3	.4
Tuition, other school fees, and childcare .....	2.308	524.523	534.825	5.0	2.0	.3	.5	.5
Communication <sup>2</sup> .....	3.694	87.780	87.667	.3	-1	-1	.1	-1
Information and information processing <sup>1 2</sup> .....	3.568	85.653	85.532	.2	-1	-1	.2	-1
Telephone services <sup>1 2</sup> .....	2.965	102.587	102.613	1.3	.0	-1	.4	.0
Information technology, hardware and services <sup>1 5</sup> .....	.604	10.113	10.012	-4.9	-1.0	-3	-1.2	-1.0
Personal computers and peripheral equipment <sup>1 6</sup> .....	.202	80.736	78.480	-15.6	-2.8	-9	-3.1	-2.8
Other goods and services .....	3.668	398.448	398.228	10.6	-1	.3	1.0	.1
Tobacco and smoking products <sup>1</sup> .....	1.267	768.005	768.483	28.1	.1	.8	2.1	.1
Personal care .....	2.401	202.490	202.221	1.4	-1	.0	.2	.1
Personal care products <sup>1</sup> .....	.662	162.767	162.415	1.9	-2	-6	.4	-2
Personal care services <sup>1</sup> .....	.580	227.512	227.751	1.5	.1	.0	-1	.1
Miscellaneous personal services .....	.947	346.525	347.402	1.3	.3	.3	.4	.3
<b>Commodity and service group</b>								
Commodities .....	42.689	172.493	173.379	-5.2	.5	2.1	.0	1.0
Food and beverages .....	16.942	216.805	216.957	.5	.1	.0	-2	.1
Commodities less food and beverages .....	25.747	149.046	150.209	-8.3	.8	3.3	.1	1.6
Nondurables less food and beverages .....	14.587	189.436	192.365	-11.9	1.5	5.8	.3	3.5
Apparel .....	3.979	115.516	117.095	.8	1.4	.7	.6	.0
Nondurables less food, beverages, and apparel .....	10.609	239.626	243.461	-15.2	1.6	7.4	.2	4.7
Durables .....	11.160	109.432	109.039	-2.1	-4	.5	.0	-3
Services .....	57.311	255.003	255.342	.8	.1	.0	.1	.2
Rent of shelter <sup>4</sup> .....	30.918	234.515	234.537	1.3	.0	.0	-1	.1
Tenants' and household insurance <sup>1 2</sup> .....	.306	121.765	122.254	2.8	.4	.3	.2	.4
Gas (piped) and electricity <sup>3</sup> .....	4.713	195.547	194.211	-10.3	-7	-1.0	-2	-1
Water and sewer and trash collection services <sup>2</sup> .....	1.035	161.790	163.567	5.9	1.1	.4	.6	.9
Household operations <sup>1 2</sup> .....	.360	152.577	153.667	1.0	.7	.4	-1	.7
Transportation services .....	5.512	250.811	251.880	2.4	.4	.0	.4	.6
Medical care services .....	4.035	399.677	400.204	3.3	.1	.2	.3	.2
Other services .....	10.432	291.573	293.266	2.4	.6	.4	.4	.2
<b>Special indexes</b>								
All items less food .....	84.135	209.308	210.021	-2.3	.3	1.1	.1	.6
All items less shelter .....	68.776	200.871	201.726	-3.3	.4	1.3	.1	.8
All items less medical care .....	94.645	203.723	204.341	-2.2	.3	1.0	.0	.6
Commodities less food .....	26.824	151.466	152.606	-7.9	.8	3.2	.1	1.6
Nondurables less food .....	15.664	191.387	194.170	-11.2	1.5	5.4	.3	3.3
Nondurables less food and apparel .....	11.686	237.011	240.515	-14.0	1.5	6.9	.2	4.3
Nondurables .....	31.530	203.377	205.017	-6.2	.8	2.9	.0	1.8
Services less rent of shelter <sup>4</sup> .....	26.392	246.622	247.308	.2	.3	.0	.2	.4
Services less medical care services .....	53.275	244.531	244.857	.6	.1	.0	.0	.2
Energy .....	9.024	201.967	205.144	-23.3	1.6	8.1	-4	4.8
All items less energy .....	90.976	212.505	212.823	1.5	.1	.2	.1	.1
All items less food and energy .....	75.111	212.097	212.449	1.7	.2	.2	.1	.1
Commodities less food and energy commodities .....	22.513	142.526	142.634	1.3	.1	.4	.3	-1
Energy commodities .....	4.311	220.264	227.506	-30.7	3.3	16.4	-5	8.6
Services less energy services .....	52.598	261.425	261.960	1.9	.2	.1	.1	.2
Purchasing power of the consumer dollar (1982-84=\$1.00) .....	-	\$.475	\$.474	-	-	-	-	-
Purchasing power of the consumer dollar (1967=\$1.00) .....	-	\$.159	\$.159	-	-	-	-	-

<sup>1</sup> Not seasonally adjusted.  
<sup>2</sup> Indexes on a December 1997=100 base.  
<sup>3</sup> This index series was calculated using a Laspeyres estimator. All other item stratum index series were calculated using a geometric means estimator.  
<sup>4</sup> Indexes on a December 1984=100 base

<sup>5</sup> Indexes on a December 1988=100 base.  
<sup>6</sup> Indexes on a December 2007=100 base.  
 - Data not available.  
 NOTE: Index applies to a month as a whole, not to any specific date.

**Table 5. Consumer Price Index for Urban Wage Earners and Clerical Workers (CPI-W): Seasonally adjusted U.S. city average, by expenditure category and commodity and service group**

(1982-84=100, unless otherwise noted)

CPI-W	Seasonally adjusted indexes				Seasonally adjusted annual rate percent change for					
					3 months ended—			6 months ended—		
	May 2009	June 2009	July 2009	Aug. 2009	Nov. 2008	Feb. 2009	May 2009	Aug. 2009	Feb. 2009	Aug. 2009
<b>Expenditure category</b>										
All items .....	207.624	209.534	209.598	210.758	-11.8	-0.8	-0.1	6.2	-6.5	3.0
Food and beverages .....	217.225	217.312	216.821	217.045	4.7	-2	-2.1	-3	2.2	-1.2
Food .....	216.912	216.977	216.395	216.610	4.6	-3	-2.4	-6	2.1	-1.5
Food at home .....	213.768	213.806	212.646	212.744	3.8	-3.1	-5.3	-1.9	.3	-3.6
Cereals and bakery products .....	252.282	252.211	251.916	251.677	9.2	-5	-3.9	-1.0	4.2	-2.4
Meats, poultry, fish, and eggs .....	204.374	203.845	201.245	202.128	3.9	-1.4	-7.1	-4.3	1.2	-5.7
Dairy and related products <sup>1</sup> .....	194.694	192.898	191.783	191.048	-3.6	-16.2	-15.4	-7.3	-10.1	-11.4
Fruits and vegetables .....	270.352	273.813	273.468	270.988	-10.4	-10.5	-3.1	.9	-10.5	-1.1
Nonalcoholic beverages and beverage materials .....	162.650	162.608	161.977	162.465	11.3	-1.7	-.1	-.5	4.6	-.3
Other food at home .....	189.923	190.000	189.366	189.945	9.4	3.6	-3.5	.0	6.5	-1.7
Sugar and sweets .....	194.731	195.695	193.001	194.039	11.2	8.8	-1.5	-1.4	10.0	-1.5
Fats and oils .....	200.498	201.926	201.077	201.203	10.6	-7.8	-8.0	1.4	1.0	-3.4
Other foods .....	205.144	204.831	204.578	205.196	8.9	4.7	-3.1	.1	6.8	-1.5
Other miscellaneous foods <sup>1 2</sup> .....	123.126	122.537	122.119	122.217	8.1	-2.7	.4	-2.9	2.6	-1.3
Food away from home <sup>1</sup> .....	223.082	223.186	223.408	223.789	5.8	3.7	1.8	1.3	4.8	1.5
Other food away from home <sup>1 2</sup> .....	154.409	155.091	156.904	156.769	8.7	2.8	-.3	6.3	5.7	2.9
Alcoholic beverages .....	220.348	220.755	221.612	221.978	5.9	1.7	2.0	3.0	3.8	2.5
Housing .....	213.097	212.972	212.765	212.823	-.5	.4	-1.1	-.5	.0	-.8
Shelter .....	242.963	243.100	242.884	243.044	2.4	1.4	1.6	.1	1.9	.9
Rent of primary residence <sup>3</sup> .....	247.874	247.966	247.880	247.869	3.2	2.5	1.9	.0	2.9	.9
Lodging away from home <sup>2</sup> .....	134.706	135.271	133.136	133.451	-3.4	-12.0	-7.0	-3.7	-7.8	-5.3
Owners' equivalent rent of primary residence <sup>3 4</sup> .....	232.851	232.942	232.879	233.061	2.3	1.8	2.0	.4	2.1	1.2
Tenants' and household insurance <sup>1 2</sup> .....	121.160	121.529	121.765	122.254	5.8	1.2	.7	3.7	3.5	2.2
Fuels and utilities .....	206.844	205.493	205.268	205.839	-14.9	-4.3	-16.0	-1.9	-9.8	-9.3
Household energy .....	183.586	181.978	181.483	181.747	-18.6	-5.6	-20.3	-3.9	-12.3	-12.5
Fuel oil and other fuels .....	224.548	227.677	225.175	233.552	-55.7	-39.6	-40.0	17.0	-48.2	-16.2
Gas (piped) and electricity <sup>3</sup> .....	189.940	188.044	187.619	187.525	-15.0	-3.0	-19.0	-5.0	-9.2	-12.3
Water and sewer and trash collection services <sup>2</sup> .....	160.241	160.813	161.801	163.201	6.8	2.2	7.1	7.6	4.5	7.3
Household furnishings and operations .....	125.430	125.313	125.131	124.347	1.7	.5	2.2	-3.4	1.1	-.7
Household operations <sup>1 2</sup> .....	152.001	152.658	152.577	153.667	.4	-2	-.4	4.5	.1	2.0
Apparel .....	119.078	119.963	120.666	120.672	-3.7	4.1	-2.6	5.5	.1	1.4
Men's and boys' apparel .....	115.184	114.537	114.086	114.936	-4.5	18.0	-6.9	-.9	6.2	-3.9
Women's and girls' apparel .....	105.873	107.602	109.019	108.852	-9.0	-.5	-4.3	11.7	-4.8	3.4
Infants' and toddlers' apparel .....	116.074	118.686	117.941	118.857	8.7	-3.2	2.6	9.9	2.6	6.2
Footwear .....	126.469	127.062	128.313	128.063	2.4	1.6	3.6	5.1	2.0	4.4
Transportation .....	168.145	176.300	176.456	181.285	-49.6	-8.9	-3.4	35.1	-32.2	14.2
Private transportation .....	164.963	173.329	173.340	178.196	-50.5	-8.5	-3.2	36.2	-32.7	14.8
New and used motor vehicles <sup>2</sup> .....	90.153	90.664	90.888	90.936	-9.0	-1.1	2.2	3.5	-5.2	2.9
New vehicles .....	136.199	137.234	137.855	136.112	-6.6	3.2	5.8	-.3	-1.8	2.8
Used cars and trucks .....	123.465	124.559	124.569	126.950	-16.3	-12.0	-2.8	11.8	-14.2	4.2
Motor fuel .....	174.513	204.503	203.579	221.467	-85.0	-28.1	-16.7	159.4	-67.2	46.9
Gasoline (all types) .....	174.723	205.099	203.341	221.758	-85.5	-25.8	-14.0	159.5	-67.2	49.4
Motor vehicle parts and equipment <sup>1</sup> .....	134.439	134.273	133.787	133.587	9.2	3.5	.5	-2.5	6.3	-1.0
Motor vehicle maintenance and repair <sup>1</sup> .....	245.036	245.129	245.421	245.871	5.0	4.6	1.3	1.4	4.8	1.4
Public transportation .....	226.424	226.048	230.677	233.494	-23.9	-17.7	-9.3	13.1	-20.9	1.3
Medical care .....	374.834	375.650	376.321	377.444	2.6	4.4	3.8	2.8	3.5	3.3
Medical care commodities .....	296.120	296.547	296.084	297.712	3.2	5.5	3.8	2.2	4.3	3.0
Medical care services .....	397.699	398.660	399.808	400.673	2.5	4.0	3.7	3.0	3.2	3.4
Professional services .....	321.250	322.098	322.537	322.955	2.6	2.6	2.9	2.1	2.6	2.5
Hospital and related services <sup>3</sup> .....	560.587	562.806	566.848	570.031	3.7	8.6	7.5	6.9	6.1	7.2

See footnotes at end of table.



**Table 5. Consumer Price Index for Urban Wage Earners and Clerical Workers (CPI-W): Seasonally adjusted U.S. city average, by expenditure category and commodity and service group-Continued**

(1982-84=100, unless otherwise noted)

CPI-W Expenditure category	Seasonally adjusted indexes				Seasonally adjusted annual rate percent change for					
					3 months ended—			6 months ended—		
	May 2009	June 2009	July 2009	Aug. 2009	Nov. 2008	Feb. 2009	May 2009	Aug. 2009	Feb. 2009	Aug. 2009
Recreation <sup>2</sup> .....	110.947	111.423	111.418	111.415	1.0	1.3	-1.3	1.7	1.2	0.2
Video and audio <sup>2</sup> .....	101.761	102.220	102.121	101.924	-1.8	-1.5	-4	.6	-1.6	.1
Education and communication <sup>2</sup> .....	122.797	122.940	123.348	123.479	1.7	2.8	2.4	2.2	2.3	2.3
Education <sup>2</sup> .....	187.168	187.894	189.018	189.859	4.8	4.5	5.5	5.9	4.7	5.7
Educational books and supplies .....	477.376	483.813	490.109	491.859	5.6	4.9	5.2	12.7	5.2	8.9
Tuition, other school fees, and childcare .....	527.111	528.674	531.480	533.890	4.8	4.5	5.6	5.2	4.6	5.4
Communication <sup>2</sup> .....	87.712	87.650	87.778	87.664	-3	1.6	.3	-2	.6	.1
Information and information processing <sup>1 2</sup> .....	85.624	85.524	85.653	85.532	-3	1.6	.0	-4	.6	-2
Telephone services <sup>1 2</sup> .....	102.231	102.153	102.587	102.613	.9	1.3	1.3	1.5	1.1	1.4
Information technology, hardware and services <sup>1 5</sup> .....	10.271	10.238	10.113	10.012	-5.9	2.9	-6.4	-9.7	-1.6	-8.1
Personal computers and peripheral equipment <sup>1 6</sup> .....	84.017	83.278	80.736	78.480	-17.3	-4.5	-15.5	-23.9	-11.1	-19.8
Other goods and services .....	393.500	394.708	398.522	398.801	2.4	3.0	34.4	5.5	2.7	19.1
Tobacco and smoking products <sup>1</sup> .....	746.009	752.078	768.005	768.483	2.1	8.3	116.5	12.6	5.1	56.1
Personal care .....	202.156	202.115	202.553	202.705	2.6	.3	1.5	1.1	1.4	1.3
Personal care products <sup>1</sup> .....	163.119	162.165	162.767	162.415	4.2	3.9	1.4	-1.7	4.1	-2
Personal care services <sup>1</sup> .....	227.829	227.800	227.512	227.751	3.6	-6	3.1	-1	1.5	1.5
Miscellaneous personal services .....	344.423	345.423	346.809	347.691	.3	.1	1.0	3.8	.2	2.4
<b>Commodity and service group</b>										
Commodities .....	168.137	171.618	171.568	173.366	-25.1	-3.8	-2	13.0	-15.1	6.2
Food and beverages .....	217.225	217.312	216.821	217.045	4.7	-2	-2.1	-3	2.2	-1.2
Commodities less food and beverages .....	142.846	147.626	147.760	150.154	-38.4	-6.0	.9	22.1	-23.9	11.0
Nondurables less food and beverages .....	176.429	186.685	187.184	193.645	-55.0	-5.1	-3.0	45.1	-34.7	18.7
Apparel .....	119.078	119.963	120.666	120.672	-3.7	4.1	-2.6	5.5	.1	1.4
Nondurables less food, beverages, and apparel .....	215.822	231.872	232.430	243.283	-64.0	-8.7	-2.7	61.5	-42.6	25.3
Durables .....	108.846	109.361	109.321	108.994	-7.2	-2.8	1.4	.5	-5.0	1.0
Services .....	253.765	253.882	254.063	254.480	.5	1.6	.0	1.1	1.1	.5
Rent of shelter <sup>4</sup> .....	234.196	234.253	234.008	234.179	2.7	1.2	1.5	.0	1.9	.7
Tenants' and household insurance <sup>1 2</sup> .....	121.160	121.529	121.765	122.254	5.8	1.2	.7	3.7	3.5	2.2
Gas (piped) and electricity <sup>3</sup> .....	189.940	188.044	187.619	187.525	-15.0	-3.0	-19.0	-5.0	-9.2	-12.3
Water and sewer and trash collection services <sup>2</sup> .....	160.241	160.813	161.801	163.201	6.8	2.2	7.1	7.6	4.5	7.3
Household operations <sup>1 2</sup> .....	152.001	152.658	152.577	153.667	.4	-2	-4	4.5	.1	2.0
Transportation services .....	249.130	249.202	250.263	251.654	-1	3.9	1.7	4.1	1.9	2.9
Medical care services .....	397.699	398.660	399.808	400.673	2.5	4.0	3.7	3.0	3.2	3.4
Other services .....	290.444	291.473	292.500	293.179	2.0	2.4	1.4	3.8	2.2	2.6
<b>Special indexes</b>										
All items less food .....	205.809	208.040	208.216	209.541	-14.5	-9	.3	7.5	-7.9	3.8
All items less shelter .....	196.980	199.559	199.725	201.265	-17.3	-1.7	-.9	9.0	-9.9	3.9
All items less medical care .....	200.797	202.725	202.769	203.921	-12.5	-1.1	-.3	6.4	-7.0	3.0
Commodities less food .....	145.372	150.057	150.211	152.561	-37.2	-5.7	1.0	21.3	-23.1	10.7
Nondurables less food .....	178.973	188.704	189.232	195.417	-52.8	-4.4	-2.8	42.1	-32.9	17.5
Nondurables less food and apparel .....	215.042	229.919	230.427	240.380	-61.1	-7.6	-2.8	56.1	-40.0	23.2
Nondurables .....	196.393	202.033	201.960	205.614	-31.8	-2.1	-3.2	20.1	-18.3	7.8
Services less rent of shelter <sup>4</sup> .....	244.177	244.247	244.854	245.730	-1.4	2.0	-2.3	2.6	.3	.1
Services less medical care services .....	243.221	243.257	243.332	243.823	.7	1.3	-.6	1.0	1.0	.2
Energy .....	177.124	191.437	190.731	199.863	-68.6	-17.6	-18.5	62.1	-49.1	14.9
All items less energy .....	212.301	212.687	212.846	213.027	1.2	1.3	2.1	1.4	1.3	1.7
All items less food and energy .....	211.745	212.196	212.505	212.680	.5	1.6	3.0	1.8	1.1	2.4
Commodities less food and energy commodities .....	142.656	143.218	143.589	143.376	-3.1	.7	5.8	2.0	-1.2	3.9
Energy commodities .....	177.375	206.474	205.483	223.093	-84.2	-28.7	-18.1	150.3	-66.4	43.1
Services less energy services .....	260.701	261.053	261.304	261.781	2.1	2.1	1.8	1.7	2.1	1.7

<sup>1</sup> Not seasonally adjusted.

<sup>2</sup> Indexes on a December 1997=100 base.

<sup>3</sup> This index series was calculated using a Laspeyres estimator. All other item stratum index series were calculated using a geometric means estimator.

<sup>4</sup> Indexes on a December 1984=100 base

<sup>5</sup> Indexes on a December 1988=100 base.

<sup>6</sup> Indexes on a December 2007=100 base.

NOTE: Index applies to a month as a whole, not to any specific date.

**Table 6. Consumer Price Index for Urban Wage Earners and Clerical Workers (CPI-W): Selected areas, all items index**

(1982-84=100, unless otherwise noted)

CPI-W	Pricing schedule 1	All items										
		Indexes				Percent change to Aug.2009 from—			Percent change to July2009 from—			
		May 2009	June 2009	July 2009	Aug. 2009	Aug. 2008	June 2009	July 2009	July 2008	May 2009	June 2009	
U.S. city average .....	M	208.774	210.972	210.526	211.156	-1.9	0.1	0.3	-2.7	0.8	-0.2	
<b>Region and area size<sup>2</sup></b>												
Northeast urban .....	M	224.748	226.695	226.714	227.598	-1.4	.4	.4	-2.1	.9	.0	
Size A - More than 1,500,000 .....	M	225.657	227.337	227.550	228.472	-1.3	.5	.4	-1.8	.8	.1	
Size B/C - 50,000 to 1,500,000 <sup>3</sup> .....	M	135.329	136.888	136.626	137.109	-1.6	.2	.4	-2.6	1.0	-2	
Midwest urban .....	M	197.971	200.487	199.824	200.723	-2.1	.1	.4	-3.0	.9	-3	
Size A - More than 1,500,000 .....	M	198.271	200.356	199.611	200.710	-2.1	.2	.6	-3.0	.7	-4	
Size B/C - 50,000 to 1,500,000 <sup>3</sup> .....	M	129.524	131.554	131.096	131.481	-2.1	-.1	.3	-2.9	1.2	-3	
Size D - Nonmetropolitan (less than 50,000) .....	M	196.047	198.674	198.455	199.404	-2.6	.4	.5	-3.4	1.2	-.1	
South urban .....	M	203.500	205.968	205.415	205.867	-2.1	.0	.2	-2.8	.9	-3	
Size A - More than 1,500,000 .....	M	206.271	208.909	208.492	208.995	-2.1	.0	.2	-2.7	1.1	-2	
Size B/C - 50,000 to 1,500,000 <sup>3</sup> .....	M	129.885	131.382	131.063	131.302	-2.1	-.1	.2	-2.9	.9	-2	
Size D - Nonmetropolitan (less than 50,000) .....	M	208.989	211.721	210.341	211.088	-2.3	-.3	.4	-3.0	.6	-.7	
West urban .....	M	212.263	213.973	213.541	213.988	-1.8	.0	.2	-2.6	.6	-2	
Size A - More than 1,500,000 .....	M	214.734	216.395	215.955	216.539	-1.5	.1	.3	-2.4	.6	-2	
Size B/C - 50,000 to 1,500,000 <sup>3</sup> .....	M	131.389	132.517	132.314	132.407	-2.3	-.1	.1	-3.1	.7	-2	
<b>Size classes</b>												
A <sup>4</sup> .....	M	193.597	195.414	195.096	195.796	-1.7	.2	.4	-2.5	.8	-2	
B/C <sup>3</sup> .....	M	130.847	132.384	132.069	132.341	-2.1	.0	.2	-2.9	.9	-2	
D .....	M	203.883	206.327	205.504	206.271	-2.3	.0	.4	-3.0	.8	-4	
<b>Selected local areas<sup>5</sup></b>												
Chicago-Gary-Kenosha, IL-IN-WI .....	M	202.464	203.691	203.554	204.246	-2.5	.3	.3	-3.5	.5	-.1	
Los Angeles-Riverside-Orange County, CA ...	M	214.446	216.145	216.128	216.628	-2.1	.2	.2	-3.2	.8	.0	
New York-Northern N.J.-Long Island, NY-NJ-CT-PA .....	M	230.307	231.916	232.177	232.841	-1.1	.4	.3	-1.4	.8	.1	
Boston-Brockton-Nashua, MA-NH-ME-CT .....	1	231.420	-	232.535	-	-	-	-	-3.3	.5	-	
Cleveland-Akron, OH .....	1	191.297	-	191.494	-	-	-	-	-3.3	.1	-	
Dallas-Fort Worth, TX .....	1	200.955	-	203.075	-	-	-	-	-3.7	1.1	-	
Washington-Baltimore, DC-MD-VA-WV <sup>6</sup> .....	1	138.510	-	140.434	-	-	-	-	-.8	1.4	-	
Atlanta, GA .....	2	-	202.632	-	202.276	-4.2	-.2	-	-	-	-	
Detroit-Ann Arbor-Flint, MI .....	2	-	199.977	-	200.169	-2.6	.1	-	-	-	-	
Houston-Galveston-Brazoria, TX .....	2	-	189.979	-	189.503	-1.9	-.3	-	-	-	-	
Miami-Fort Lauderdale, FL .....	2	-	219.091	-	219.000	-2.5	.0	-	-	-	-	
Philadelphia-Wilmington-Atlantic City, PA-NJ-DE-MD .....	2	-	223.361	-	225.481	-1.2	.9	-	-	-	-	
San Francisco-Oakland-San Jose, CA .....	2	-	220.996	-	221.279	.0	.1	-	-	-	-	
Seattle-Tacoma-Bremerton, WA .....	2	-	221.993	-	221.873	-.6	-.1	-	-	-	-	

<sup>1</sup> Foods, fuels, and several other items priced every month in all areas; most other goods and services priced as indicated:

M - Every month.

1 - January, March, May, July, September, and November.

2 - February, April, June, August, October, and December.

<sup>2</sup> Regions defined as the four Census regions. See technical notes.

<sup>3</sup> Indexes on a December 1996=100 base.

<sup>4</sup> Indexes on a December 1986=100 base.

<sup>5</sup> In addition, the following metropolitan areas are published semiannually and appear in Tables 34 and 39 of the January and July issues of the CPI Detailed Report: Anchorage, AK; Cincinnati-Hamilton, OH-KY-IN; Denver-Boulder-Greeley, CO; Honolulu, HI; Kansas City, MO-KS; Milwaukee-Racine, WI; Minneapolis-St. Paul, MN-WI; Phoenix-Mesa, AZ; Pittsburgh, PA; Portland-Salem, OR-WA; St. Louis, MO-IL; San Diego, CA;

Tampa-St. Petersburg-Clearwater, FL.

<sup>6</sup> Indexes on a November 1996=100 base.

- Data not available.

NOTE: Local area indexes are byproducts of the national CPI program. Each local index has a smaller sample size than the national index and is, therefore, subject to substantially more sampling and other measurement error. As a result, local area indexes show greater volatility than the national index, although their long-term trends are similar. Therefore, the Bureau of Labor Statistics strongly urges users to consider adopting the national average CPI for use in their escalator clauses.

NOTE: Index applies to a month as a whole, not to any specific date.

**Table 7. Chained Consumer Price Index for All Urban Consumers (C-CPI-U): U.S. city average, by expenditure category and commodity and service group**

(December 1999=100, unless otherwise noted)

<b>C-CPI-U</b>	Relative importance, 2005-2006	Unadjusted indexes		Unadjusted percent change to Aug. 2009 from—	
		July 2009	Aug. 2009	Aug. 2008	July 2009
<b>Expenditure category</b>					
All items .....	100.000	123.711	123.955	-1.5	0.2
Food and beverages .....	14.726	127.541	127.588	.5	.0
Food .....	13.648	127.532	127.577	.3	.0
Food at home .....	7.557	122.844	122.743	-1.7	-1.1
Food away from home .....	6.091	133.605	133.847	3.0	.2
Alcoholic beverages .....	1.077	128.009	128.076	2.7	.1
Housing .....	42.421	129.087	128.915	-.7	-.1
Shelter .....	32.409	131.820	131.803	.9	.0
Fuels and utilities .....	5.004	155.640	155.255	-10.8	-2.2
Household furnishings and operations .....	5.008	95.877	95.121	-.3	-.8
Apparel .....	3.988	85.167	86.232	.4	1.3
Transportation .....	17.393	122.843	123.872	-9.3	.8
Private transportation .....	16.285	123.365	124.468	-9.2	.9
Public transportation .....	1.108	116.845	116.847	-11.0	.0
Medical care .....	6.085	145.844	146.130	3.1	.2
Medical care commodities .....	1.615	128.494	129.138	3.5	.5
Medical care services .....	4.470	152.260	152.392	2.9	.1
Recreation .....	5.935	105.259	105.236	-.5	.0
Education and communication .....	6.196	110.001	110.825	2.1	.7
Education .....	2.771	174.898	178.469	5.3	2.0
Communication .....	3.425	73.998	73.787	-.5	-.3
Other goods and services .....	3.257	133.960	133.832	4.2	-.1
<b>Commodity and service group</b>					
Services .....	58.427	134.299	134.454	.4	.1
Commodities .....	41.573	110.811	111.158	-4.0	.3
Durables .....	11.817	81.143	80.544	-2.2	-.7
Nondurables .....	29.756	126.133	127.059	-4.8	.7
All items less food and energy .....	77.561	118.668	118.763	1.0	.1
Energy .....	8.790	171.687	174.258	-23.2	1.5

Indexes for 2009 are initial estimates. Indexes for 2008 are interim adjustments.  
NOTE: Index applies to a month as a whole, not to any specific date.